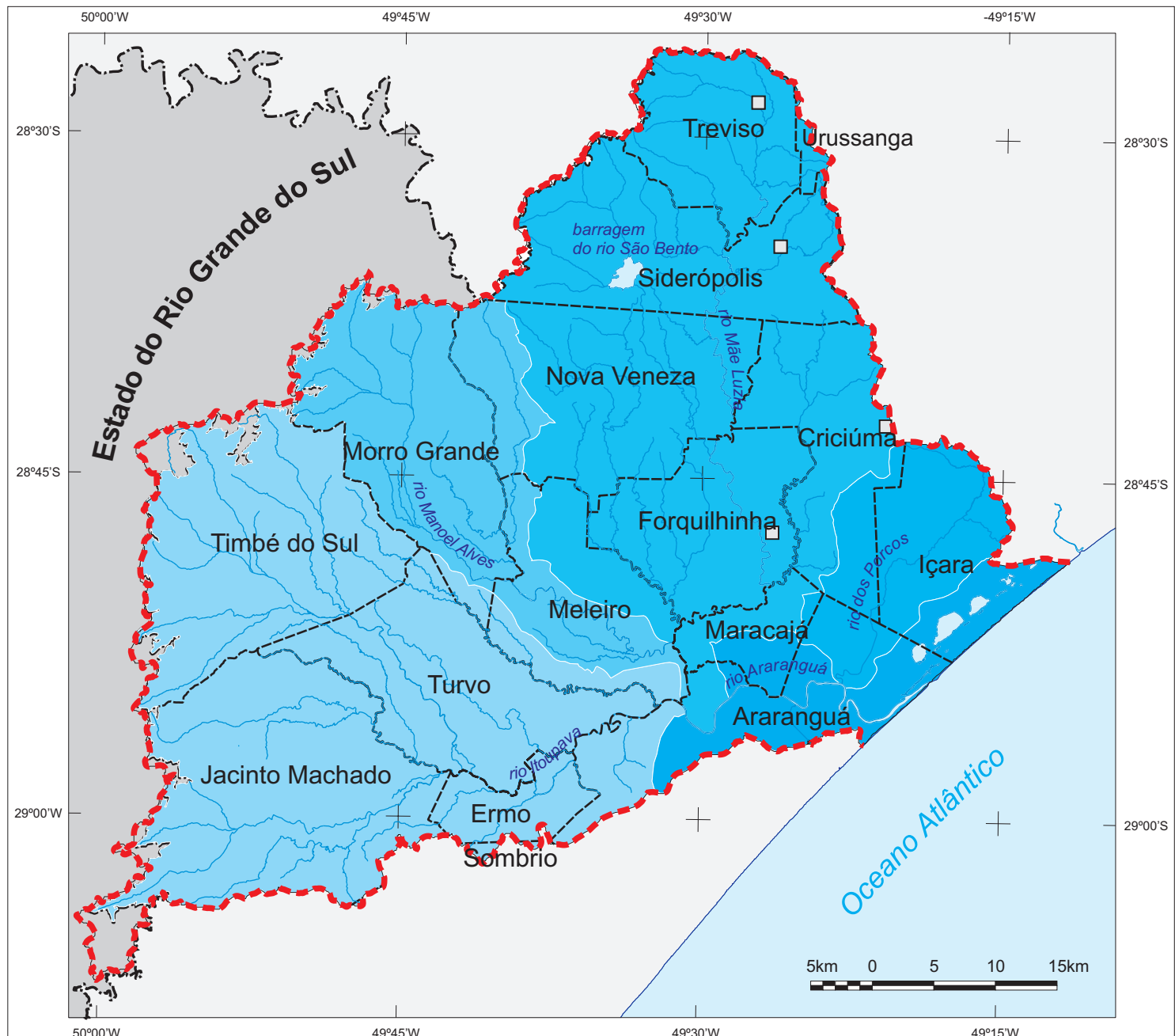




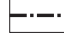



Bacia do rio Araranguá

Cadastro de captação: mineração



LEGENDA:

 limite da bacia	Sub-bacias	Ponto de Captação
 bacia limítrofe	 rio Araranguá	
 lagoa e barragem	 rio dos Porcos	
 rio principal	 rio Mãe Luzia	
 limite estadual	 rio Manoel Alves	
 limite municipal no interior da bacia	 rio Itoupava	

FONTE: Secretaria de Estado do Desenvolvimento Econômico Sustentável

ORGANIZAÇÃO E DESENHO: Geóg. Maurício Pamplona.

Realização

Apoio

Patrocínio

